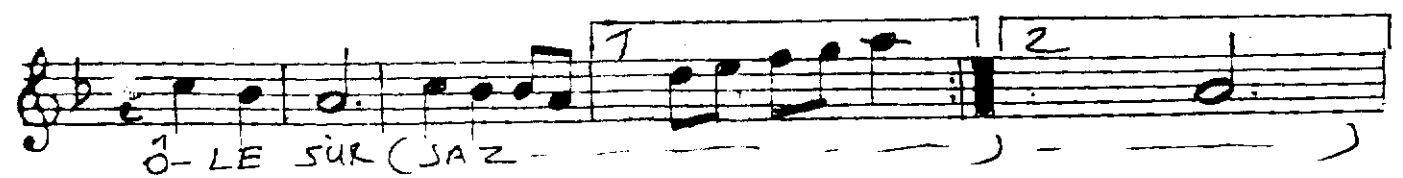
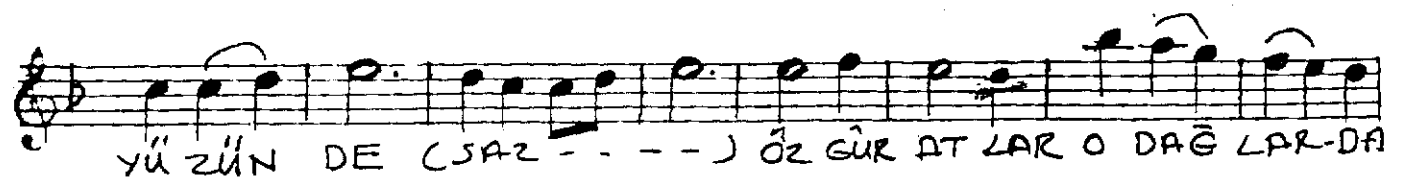
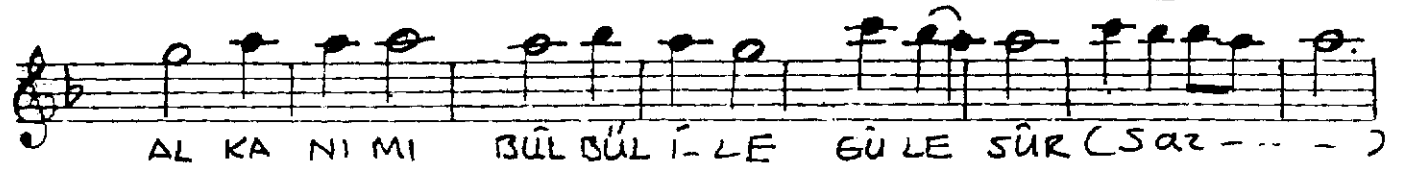
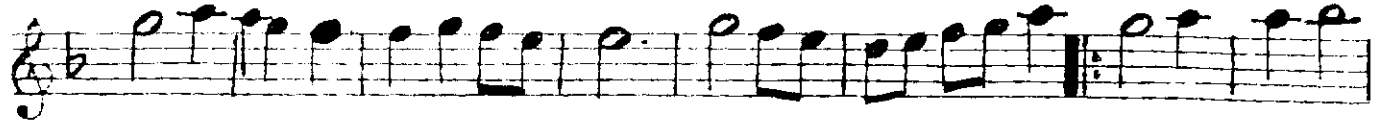


MUHAYYER KÜRDİ ŞARKI

(1)

(AL kanımı bülbül ile güle sür) Müzik: YAŞAR ÖNCAI
Söz: CUMALI ÜNALD

Usulü: Semâ
♩ = 220
4' 46"

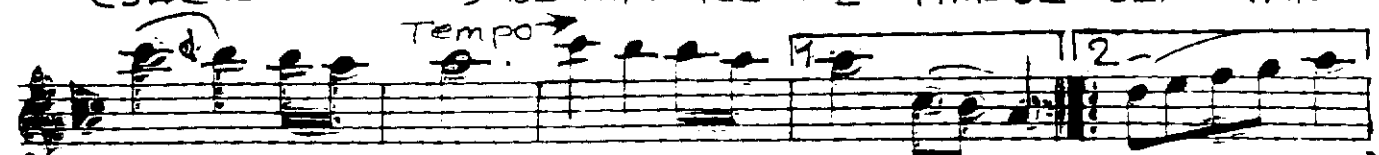




Ö-NÜM- DE U- ÇU RUM AR- DIM DA ZA MAN



(SAZ - - - -) BE-NİM KİS-ME TİM-DE SEN VAR



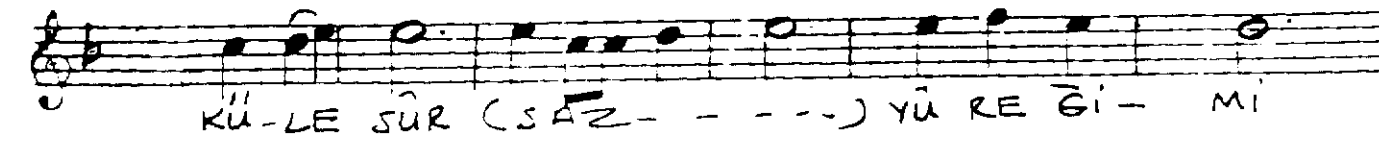
SIN SU AN (SAZ - - - -) *Tempo*



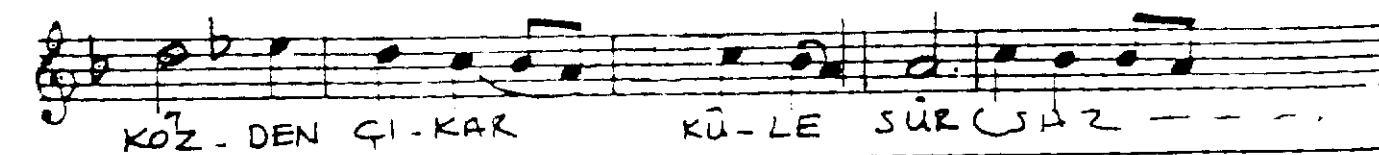
BİR YAN GIN YE-RİN- DE YAN-DIK ÇA YA- NAN



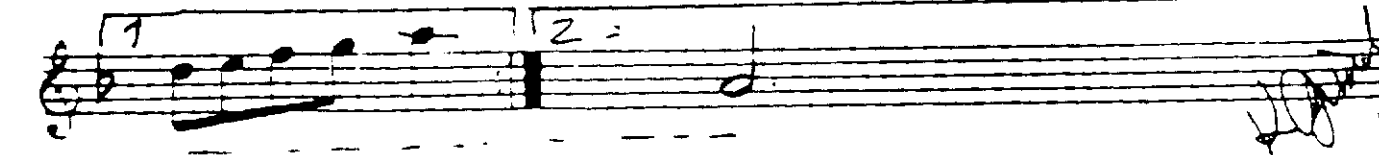
(SAZ - - - -) YÜ-RE Ğİ Mİ KÖZ-DEN ÇI-KAR



KÜ-LE SÜR (SAZ - - - -) YÜ RE Ğİ- Mİ



KÖZ-DEN ÇI-KAR KÜ-LE SÜR (SAZ - - - -)



AL KANIMI BÜLBÜLE SÜFÜR ÖNÜMDE UÇURUM ARDIMDA ZAMAN
BİR DÜNYAYI SENİZ OLAN ÇÖĞE YÖR BİR KÖME TİMDE SENİN İTİ AN
BİR SEN OLSAN BİRDE BEN YERİMDE BİR YAN GIN YERİNDE YANDIR YANAY
OLUR ATCAR ODAĞLARDA ÇİLE SÜR YÜREĞİMİ KÖZDEN ÇIKAR KÜLE SÜR

(CUMALİ ÜNALDI)